



# ALOHA NOW

## Get going with Aloha Now

### Your services made easier than ever!

With Aloha Now, Guests have a fast and convenient solution to order and pay, without the need to install any app. Restaurants also benefit from lower staff costs and faster table turns, a win-win proposition.

Right from mobile ordering, click and collect, delivery and most importantly order and pay at table, **Aloha Now** supports seamless restaurant management.

## FEATURES



Choose from a mobile website or native app



Integrates with Aloha Loyalty



Provides safe, secure and enhanced customer experience

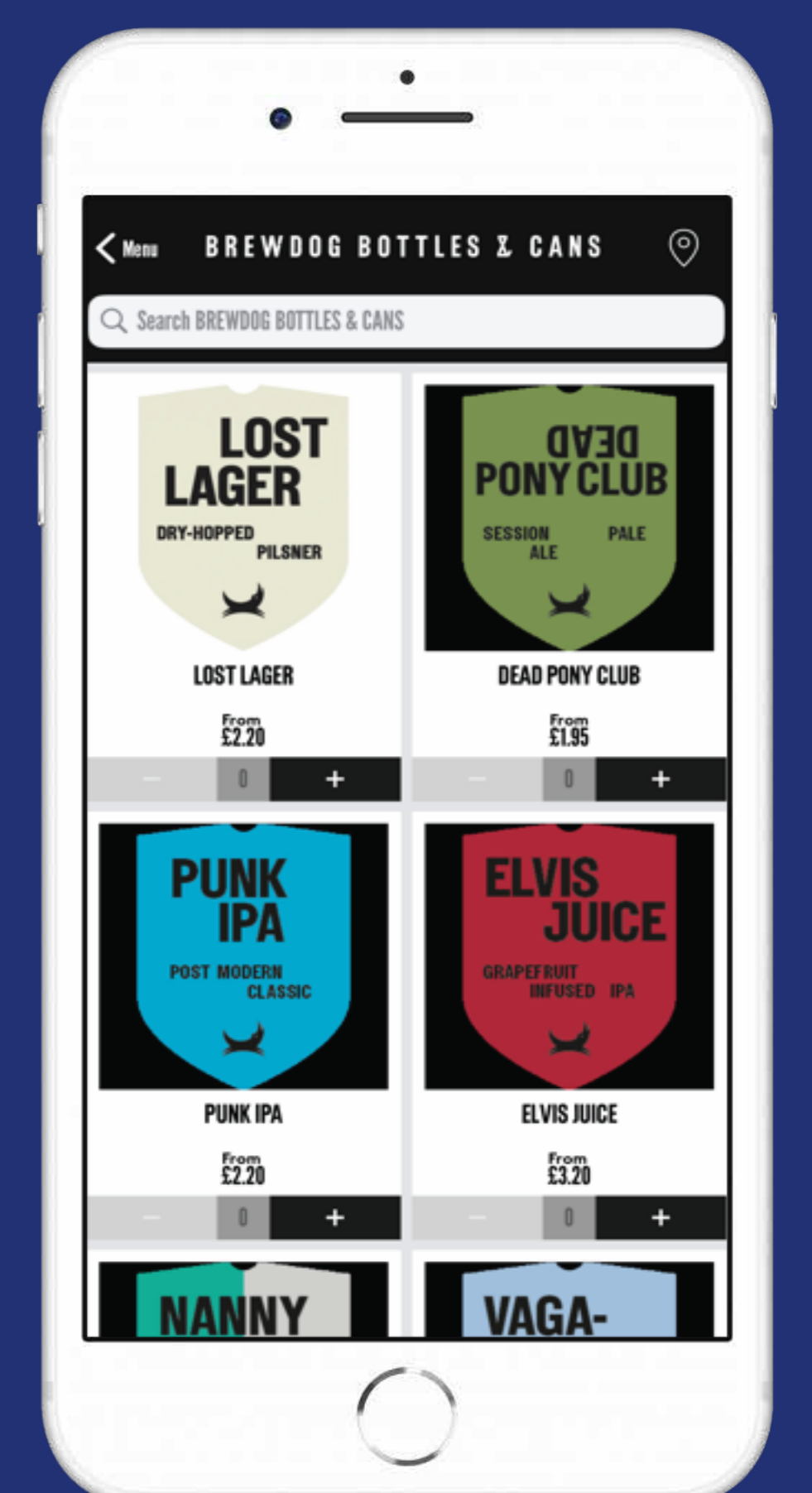
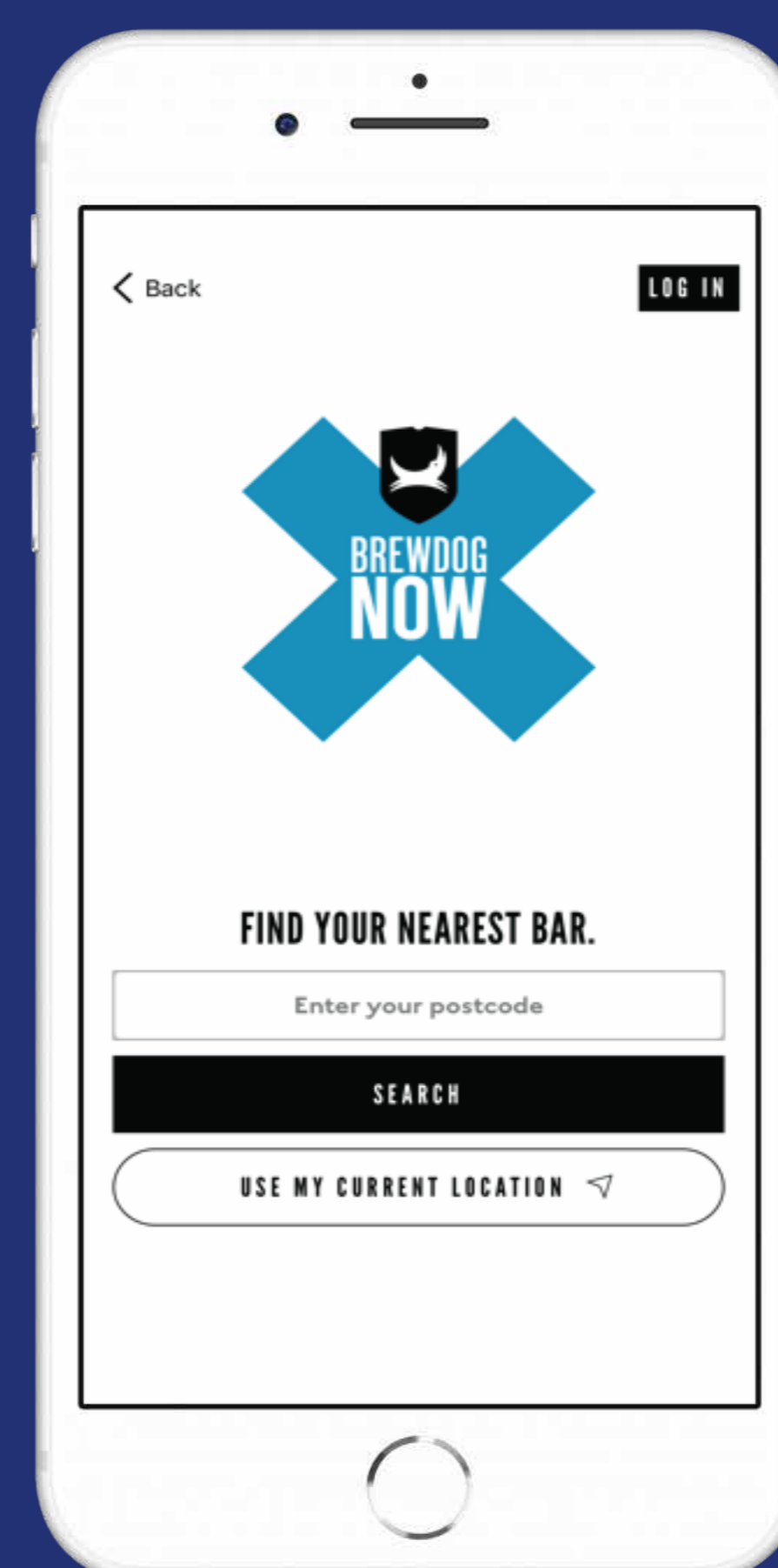
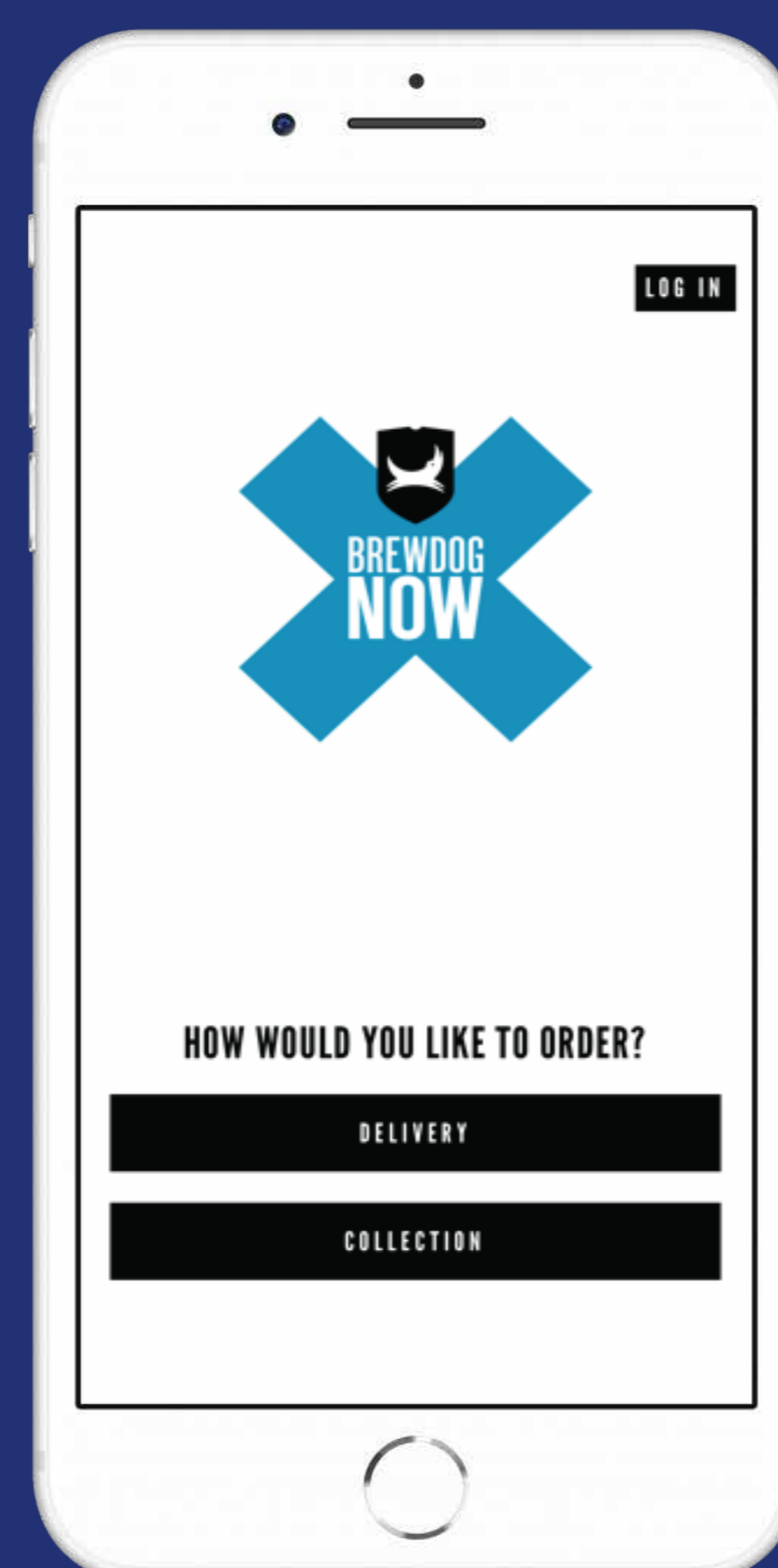


Integration with Stripe for fast setup



Create geo location offers.

Used by leading hospitality operators such as Brewdog



Call Today – 0800 731 8451



# TABLE SERVICE

## Mobility, to Drive Client Engagement Now!

We are delighted to announce our new mobile platform, **Aloha Now**, a mobile ready solution for guest ordering and delivery.

Aloha Now is about safe and simple guest ordering and payment, encouraging loyalty and increasing spend.



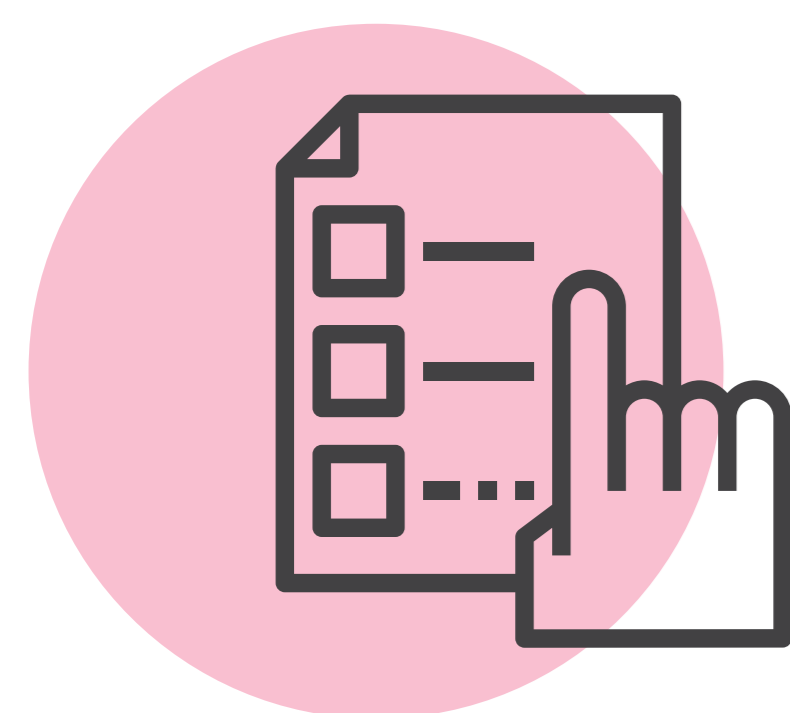
## BENEFITS

### TAKEOUT



#### Speed of Service

Customer Lookup, intuitive custom order flow, Caller ID Integration (none VOIP)



#### Order Accuracy

Future orders with capacity management



#### Accurate Quote Times

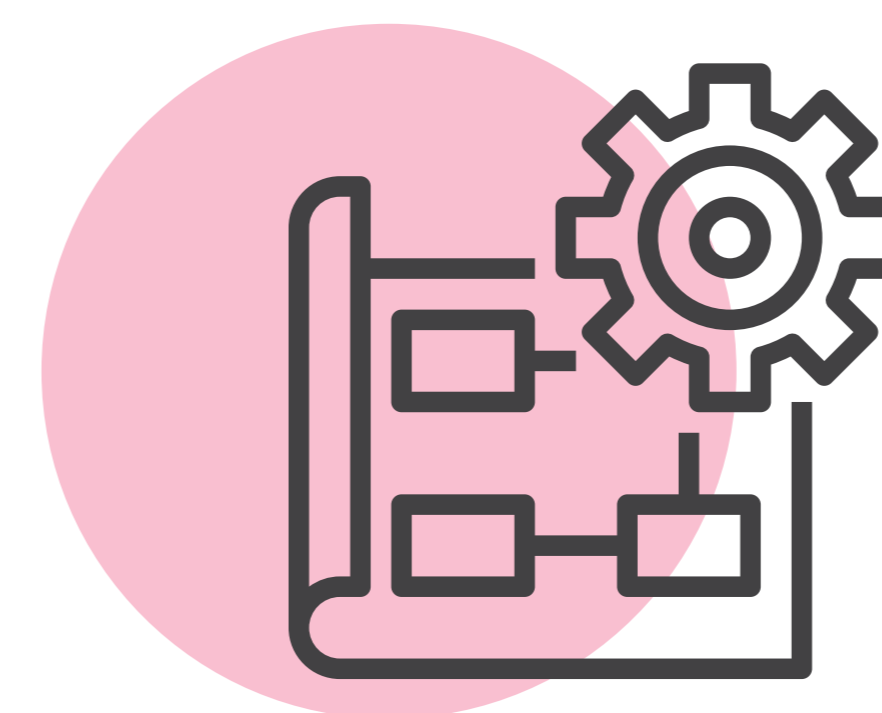
On the go quote time management, integrates with Aloha Kitchen for load management.

### CLOUD PLATFORM



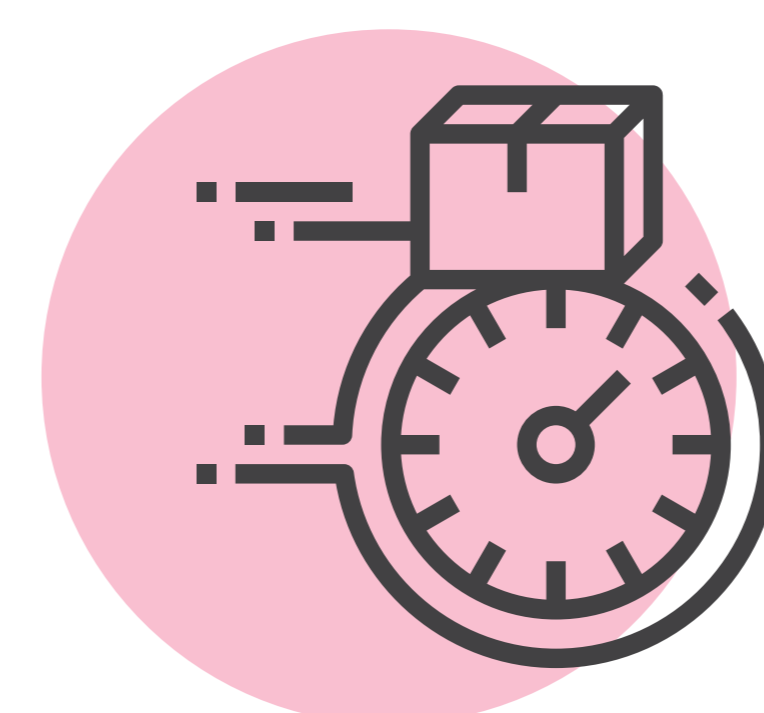
#### Integration with food aggregators

Injects orders from all major food aggregators directly into the Aloha Takeout Module.



#### Efficient management of your menu

Pulls menus from Aloha, to allow management of your offering across multiple platforms, including the ability to change and republish your menus seamlessly.



#### Auto accept, no rekey mistakes and speed of service:

To positively impact your rankings on the aggregator website.

Want to discover more?

VISIT

[www.alohaepos.co.uk](http://www.alohaepos.co.uk)